

Gyptone[®]

EDGE A[™]

QUICK-LOCK

ACTIV
air

Design and technique

Product description

Gyptone edge A is pre-painted, removable, acoustic suspended ceiling mounted in an exposed grid system (T15 or T24). The visible width of the grid system is 15 or 24 mm. The ceiling can be used for many applications like schools, offices and commercial settings. Gyptone edge A is a fully demountable ceiling so the ceiling provides good opportunities for inspection in the cavity above the ceiling. The product is subject to full recycling as raw material for new plaster boards.

Gyptone edge A is available with perforated and non-perforated surface. Thickness is 10 mm and the format is 600 x 600 mm.

Plenum height

Minimum and maximum plenum heights with T-grid system, is to be found on page 4.

Surfaces

The tiles surface is painted from the factory. Each Gyptone tile is painted with the colour NCS0500, with a gloss value of 5-9 according to ISO 2813. Future treatment is to be executed with a shorthair roller as spray painting will impair the acoustic performance. The colour of the grid system is snow-white (close to RAL9016 or RAL9003).

Grid system

Gyptone edge A is installed on a Quick-Lock grid system T15/T24. The system is suspended and need the hangers suitable for the system. Gyptone edge A needs to be installed in accordance with this installation manual as well as the general specification of the project.

Fire resistance

A2-s1, d0.

Loading

Maximum point load for each tile, with a deflection of max 2 mm is 3 kg. If higher loading is needed the installations needs to be fixed to the slab above with dedicated suspensions. Maximum load equally spread on the main beams is 5 kg/m for T15 mm grids and 7 kg/m for T24 mm grids. Maximum point load for the grid is 3 kg.

Stability

Gyptone edge A is to be installed and used in rooms with relative humidity not exceeding permanently 70% or temperatures exceeding 45 degrees celcius.

Weight

Non perforated Gyptone edge A approx. 8 kg/m²
Perforated Gyptone edge A approx. 7 kg/m²

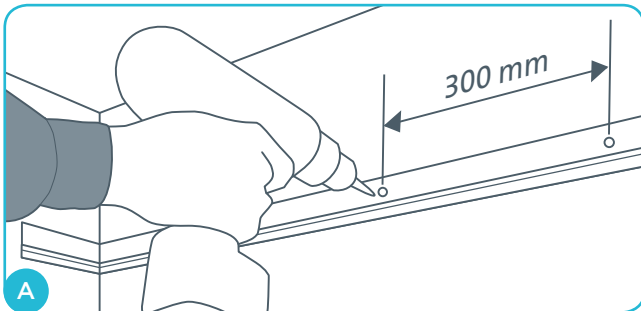
Cleaning

Can be cleaned with a damp cloth. Do not use detergents. Always use gloves when installing Gyptone edge A.

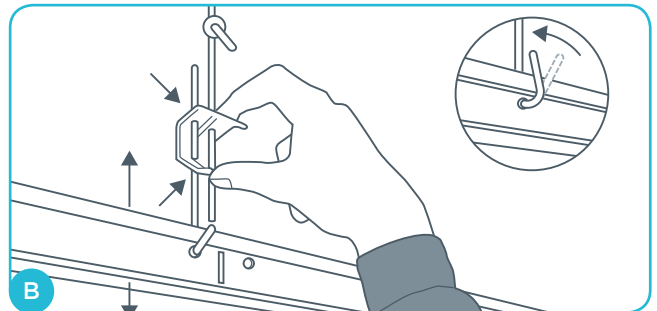
Maintenance

If damages on edges or surfaces occurs, the best solution is to replace the damaged tile, with a new tile.

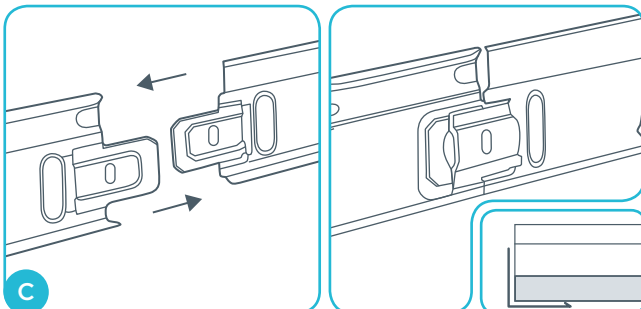
Installation of grid system and Gyptone edge A ceiling tiles. Prior to installation it is recommended to read the manual thoroughly.



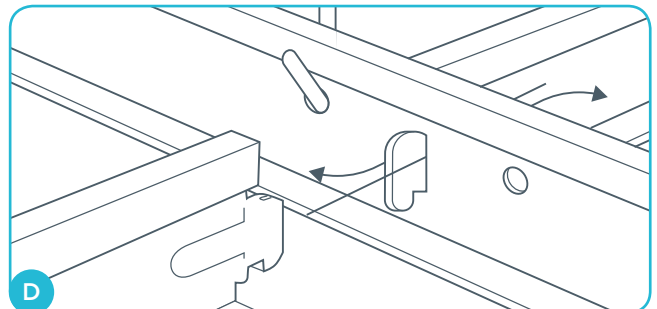
The placement of the wall angle is marked with a bubble level/chalk line and mounted with a flatheaded screw suitable for the wall per max. 300 mm, the first one no more than 50 mm from a corner. The wall angles should not be shorter than 300 mm. Cut the profiles in close mitre at the corner joint. If the wall is uneven mount a thin wooden list behind the wall angle.



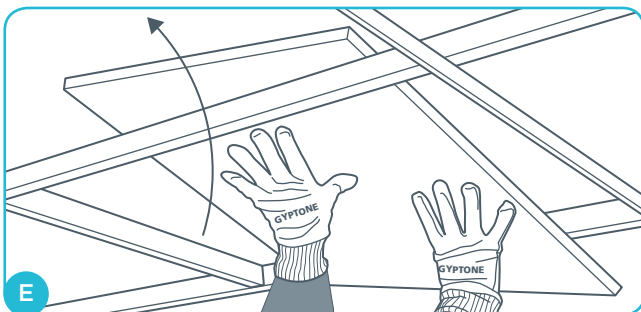
Hangers for the main beams are placed in rows per 1200 mm. The first main beam max. 600 mm from the wall. First hanger in main beam max. 400 from wall. The other hangers per max. 1200 mm. See the illustration on page 3. The hook of the hanger must be squeezed together with a pair of nippers.



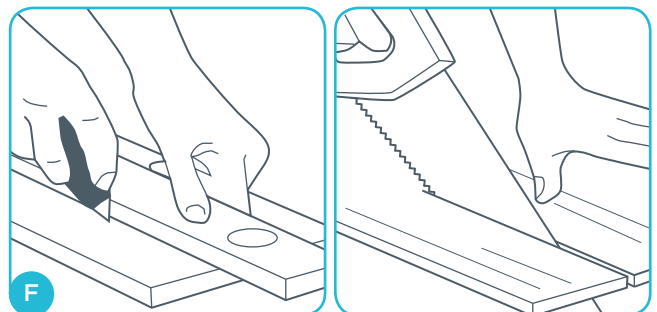
At the longitudinal assembly of the main beams the couplings should be pushed together until they click. Adjust the hangers so that all main beams rests on the wall angle; see the illustration at the bottom right hand side.



When mounting the cross tees always place the hook in the right side of the slot seen from the mounting side. Cross tee is mounted at each 600 mm. See the illustration on page 3. The length of the cross tees closest to the wall is adjusted. The grid system is adjusted to the accurate height.



When placing the Gyptone tiles, use cotton gloves. Lift the tiles square through the grid system and lower it onto its place. Please note that all Gyptone tiles are directional (see the installation method inserted in the Gyptone package). All installations should be finished before mounting the tiles.

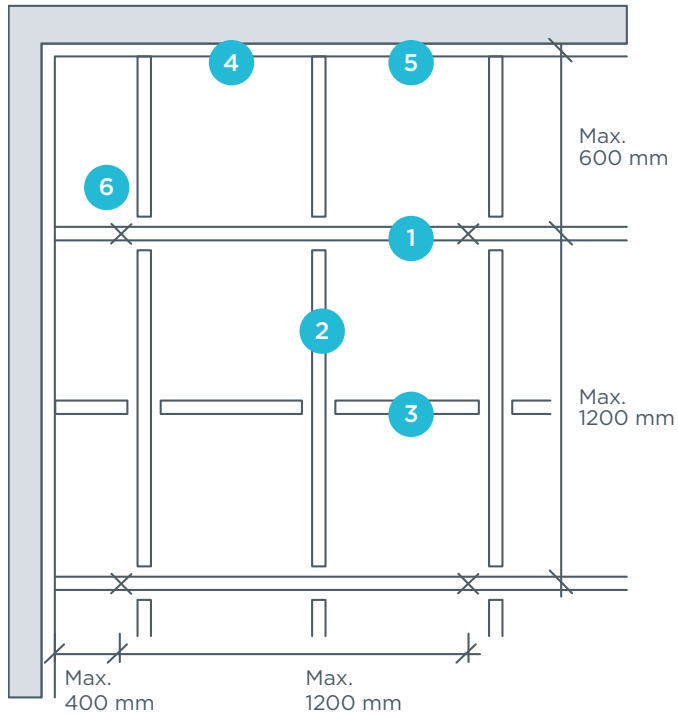


Adjusting the frieze tiles against the wall could be done with either a knife or a saw. When using a knife cut the front side cardboard first, then break the tile, and then cut through the backside cardboard. When using a saw, cut the tile from the frontside of the tile. The frieze tiles should not be cut with an undersize of more than max. 5 mm. To see different kinds of frieze solutions for edge A, go to www.gyptone.com

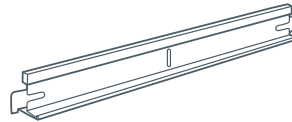
Gyptone® EDGE A™

QUICK-LOCK

Installation manual



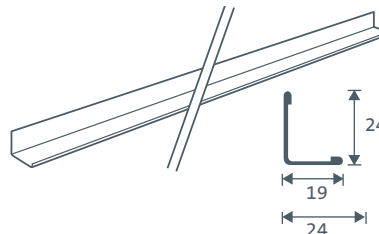
- 1 Main beam**
L: T-15 3000 mm
L: T-24 3600 mm



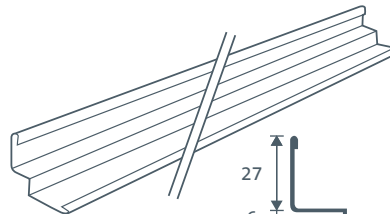
- 2 Cross Tee**
L: 1200 mm



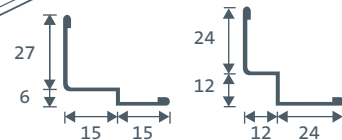
- 3 Cross Tee**
L: 600 mm



- 4 Wall angle**
L: 3000 mm

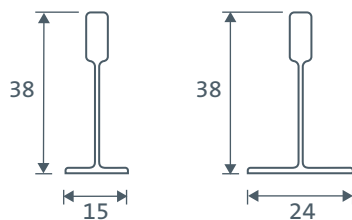


- 5 Shadow moulding**
L: 3000 mm



- 6 Adjustable hangers for lengths between 90-1500 mm**

Grid system



Dimension on T-15 and T-24 grid system

Estimated consumption suspended installation of grid system

	Item	Term T15/T24	Length mm	cc mm	Usage/m ² 600x600	Usage/m ² 600x1200
1	Main beam	4820181/4810181	3000/3600	1200	0.83 m	0.83 m
2	Cross Tee	4820163/4810163	1200	600	1.67 m	1.67 m
3	Cross Tee	4820161/4810161	600	1200	0.83 m	-
4a	Wall angle 19 x 24	4133101	3000	-	Measurement	Measurement
4b	Wall angle 24 x 24	4833301	3000	-	Measurement	Measurement
6	Ajustable Hanger	-	-	1200	0.64 pcs.	0.69 pcs.

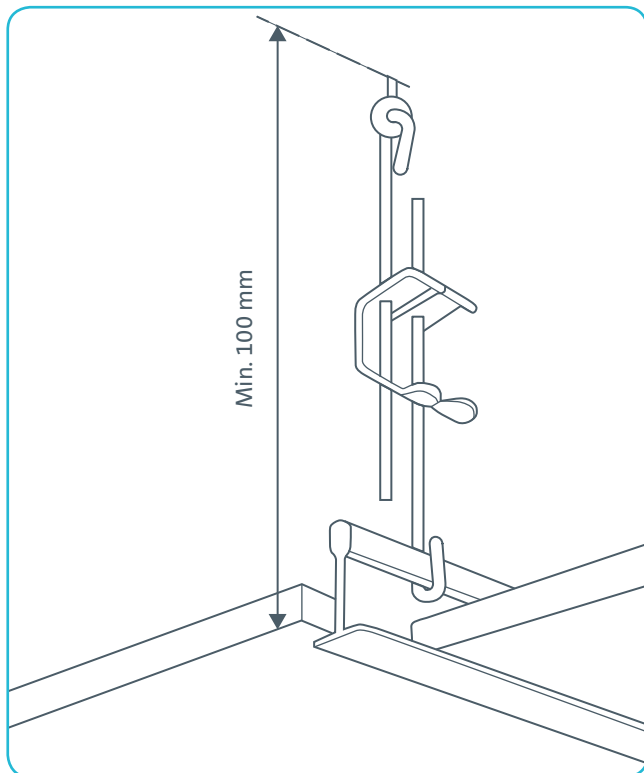
Gyptone® EDGE A™

QUICK-LOCK

Installation manual

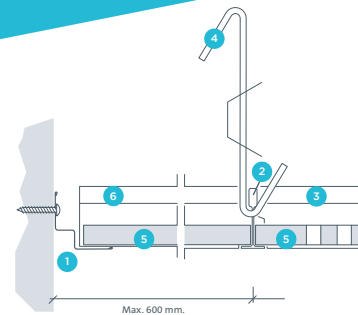
Gyptone edge A, suspension of grid system

To ensure an easy-going mounting of the tiles in the gridsystem, the distance between the lower surface of the grids and the above element of building should be min. 100 mm.

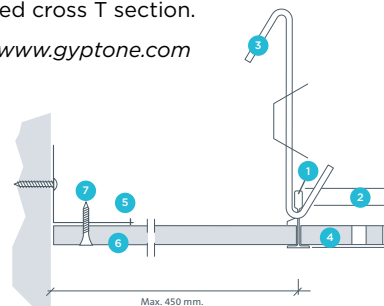


T-grid system with adjustable hangers

The height is measured without any Gyptone tiles and without attachment to the slab above the ceiling. The distance is from the top of the hanger, to the bottom of the painted grid system.



- 1 Shadow moulding 4140017 or 4140018, attached to wall at 300 mm. with screw pan head.
- 2 Main T section 4820181 (15 mm) or 4810181 (24 mm), cc distance 1200 mm.
- 3 Cross T section 4820163 (15 mm) or 4810163 (24 mm), lenght 1200 mm, cc distance 600 mm.
- 4 Adjustable hanger, cc distance 1200 mm.
- 5 Gyptone plasterboard with edge A (perforated / non perforated).
- 6 Adjusted cross T section.
- 7 Go to www.gyptone.com



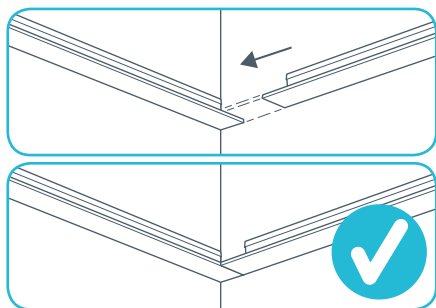
- 1 Main T section 4820181 (15 mm) or 4810181 (24 mm), cc distance 1200 mm.
- 2 Cross section 4820161 (15 mm) or 4810161 (24 mm), lenght 600 mm, cc distance 1200 mm.
- 3 Adjustable hanger, cc distance 1200 mm.
- 4 Gyptone plasterboard with edge A.
- 5 Steel angle H 50/50, attached to wall at 400 mm, with screw pan-head.
- 6 12.5 mm Gyproc plasterboard Gyptone BIG Base (Jointing supporters with steel base plate and filters/screws).
- 7 Gyproc screw QS 25.

T-grid Cross-Lock system with adjustable hangers

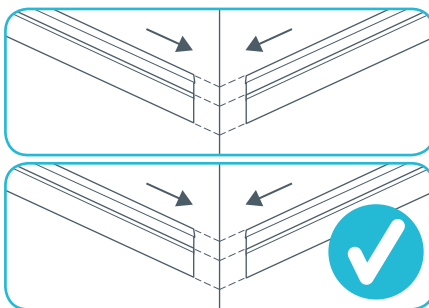
Items					
T15 / T24	Adjustable hanger 120-160	Min. height	120 mm	Max. height	160 mm
T15 / T24	Adjustable hanger 135-190	Min. height	135 mm	Max. height	190 mm
T15 / T24	Adjustable hanger 190-300	Min. height	190 mm	Max. height	300 mm
T15 / T24	Adjustable hanger 340-600	Min. height	340 mm	Max. height	600 mm
T15 / T24	Adjustable hanger 530-996	Min. height	530 mm	Max. height	990 mm
T15 / T24	Adjustable hanger 630-1230	Min. height	1040 mm	Max. height	1250 mm
T15 / T24	Adjustable hanger 775-1480	Min. height	1040 mm	Max. height	1480 mm

Good advice

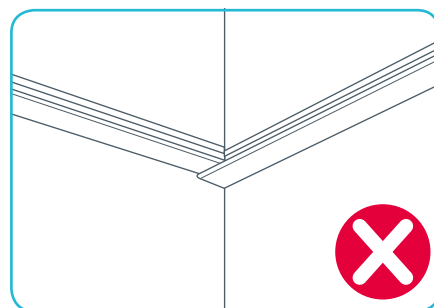
Corners with wall angle



Butt joint

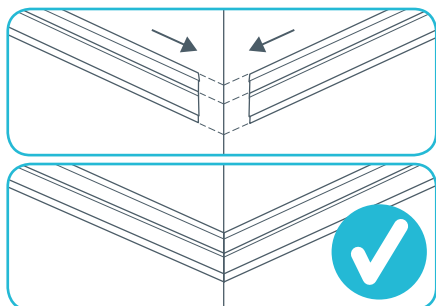


Mitre joint

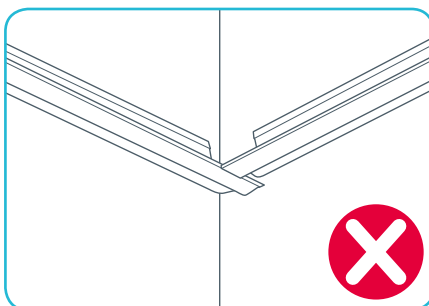


Overlap joint

Corners with shadow moulding

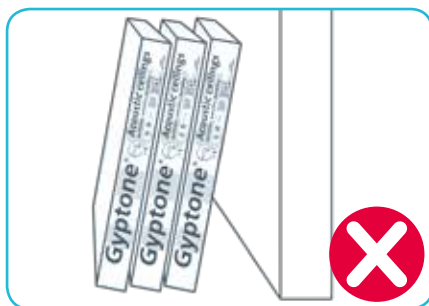
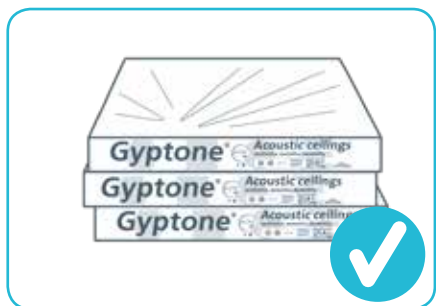


Mitre joint



Butt joint

How to handle a box of tiles on the site



How to open a box, without damaging the tiles



Check list for installing grid system and Gyptone edge A tiles.

Prior to installation it is recommended to read the manual thoroughly.

- ☐ Humidity in the room should not exceed 70% during installation or usage.
- ☐ Only usage of API profiles as grid system.
- ☐ Fix wall angle to wall, with a maximum of 300 mm between the screws.
- ☐ For the best connection between the wall angles in the corners, make a butt joint or mitre joint.
- ☐ Survey the room and position the hangers according to this manual and the general specification of the project.
- ☐ Always slide the Cross Tee in from the right side, when connecting to the main beam.
- ☐ Adjust the entire grid system into level. Recommended to use a laser.
- ☐ It is recommended to use a perforated tile as frieze for better acoustic absorption (except Line 4)
- ☐ For more frieze solutions visit our webside www.gyptone.com.
- ☐ Always use clean gloves when installing Gyptone tiles.
- ☐ Make sure to install the tiles in the right direction (direction line on the backside of the tiles), to avoid a possible colour difference between the tiles when they are installed.



Saint-Gobain Denmark A/S

Gyproc, Hareskovvej 12
4400 Kalundborg, Denmark
Tel. : +45 5957 0330
Fax: +45 5957 0331
e-mail: info@gyproc.dk
www.gyptone.com



ISO and OHSAS

Gyproc A/S has a quality management system, which is certified by BVQI Denmark A/A according to the demands in ISO 9001, 14001 and OHSAS 18001